



COMPANY

THE COMPANY, LOCATED IN THE OBERBERG COUNTY, HAS 100 YEARS OF EXPERIENCE.

Many satisfied customers around the world, rely on the high-quality wire of **MAZOUZI** for further processing.



The continuous further development of production methods is characterised by comprehensive know-how.

FOR OUR CUSTOMERS, THIS MEANS:

- Many different materials from one source
- Flexible production also allowing for short notice delivery of small quantity orders
- The individual wire production permits customer-specific articles
- Special development of processing properties and special uses
- Direct contact person



THE DIVERSITY OF THE MAZOUZI WIRES IS UNIQUE.

Every year, **MAZOUZI** refines more than 500 tons of a diverse variety of wires with diameters of approx. 0,06 to 1mm.

The wire is delivered, around the world, in all required types: smooth, crimped, straightened, single wires, and in strands with cut and counted ends on cardboard bobbins.





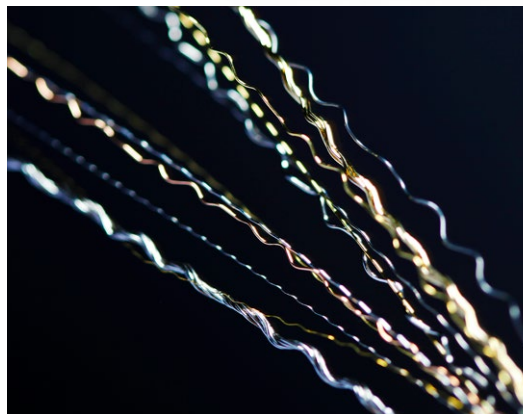
WIRE	QUALITIES				
	Strand crimping (counted ends)	Ring Crimping	straight- ened	smooth	Cable wires DIN 2078
Cast steel wire, naturally hard (F. in N/mm ²) Type: shiny, zinc-plated or brass-plated (as mono or cord wire)	1770-2800	1770-2800	✓	1800-3000	✓
Steel wire, oil-finish hardened Strength, as agreed upon	✓	✓	✓	✓	
Stainless steel wire, rust-free, in the raw materials: 1.4301-1.4306-1.4310-1.4401 1.4404 1.4541-1.4571-1.4860 as well as special materials	✓	✓	✓	✓	✓
Stainless steel strand	✓	✓		✓	
Copper wire	✓	✓	✓	✓	
Brass wire CuZn36 / CuZn37	✓	✓	✓	✓	✓
Bronze wire CuSn6	✓	✓	✓	✓	✓
New silver wire CuNi12Zn24	✓	✓	✓	✓	✓
Iron/Bessemer wire	✓	✓	✓	✓	
Aluminium	✓	✓	✓	✓	
Cord wire, brass-plated	✓	✓	on demand	✓	
Nickel wire	on demand	on demand	on demand	on demand	

CRIMPED WIRES FOR THE BRUSH INDUSTRY ARE AVAILABLE IN DIFFERENT DESIGNS:

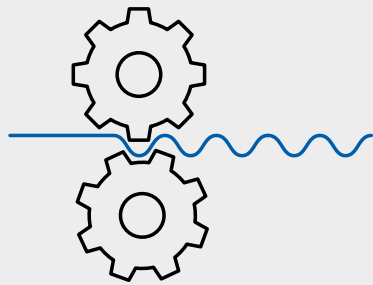
- Gear-crimped wires, single- and double-crimped
- Pin-crimped wires

APPLICATION EXAMPLES:

- Roller brushes
- Strip brushes
- Spiral brushes
- End, cup, circular and lath brushes
- for deburring
- Paint removal
- Rust removal
- Polishing
- Descaling or other surface treatment
- Special brushes



GEAR-CRIMPED WIRES single-crimped



F - FINE CRIMP:

Wire $\varnothing \times 2$

N - NORMAL CRIMP:

Wire $\varnothing \times 3$

G - COARSE CRIMP:

Wire $\varnothing \times 4 - 5$

CRIMP - NO. EXAMPLE:

RO 101

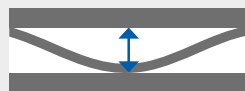
012 (Wave depth in mm)

Type Crimp-No. for
wave length 1,7mm

Caliber value for 0,12
(fine crimp wire \varnothing 0,06mm)



Wave length / mm

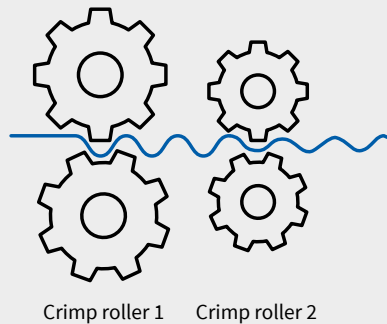


Caliber value

Crimp no.	Module-no. (internal information)	MAZOUZI Module - no.	Crimp length	Wire \varnothing recommendation	MAZOUZI Crimp - no. Example
1	0.5	101	1.7	0.06 - 0.20mm	F = RO 101 012 N = RO 101 020 G = RO 101 025
1	0.75	102	2.6	0.06 - 0.25mm	
1	1.0	103	3.3	0.06 - 0.35mm	
1	1.25	104	4.2	0.10 - 0.40mm	F = RO 104 020 N = RO 104 030 G = RO 104 040
1	1.5	105	5.0	0.15 - 0.50mm	
1	1.75	106	5.9	0.15 - 0.60mm	
1	2.0	107	6.7	0.20 - 0.80mm	F = RO 107 040 N = RO 107 060 G = RO 107 080
1	2.5	108	8.5	0.25 - 0.80mm	
1	3.0	109	10.2	0.30 - 0.80mm	
1	3.5	110	11.9	0.30 - 0.80mm	F = RO 110 060 N = RO 110 090 G = RO 110 120

i Other Crimps possible after analysis of wire sample.

GEAR - CRIMPED WIRES double - crimped



F - FINE CRIMP:

Wire $\varnothing \times 2$

N - NORMAL CRIMP:

Wire $\varnothing \times 3$

G - COARSE CRIMP:

Wire $\varnothing \times 4 - 5$

CRIMP - NO. EXAMPLE:

RO 430

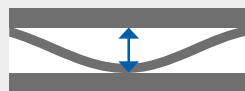
040 (Wave depth in mm)

Type Crimp-No. for
wave length 3,3/8,5mm

Caliber value for 0,40
(fine crimp wire \varnothing 0,20mm)



Wave length / mm



Caliber value

Crimp no.	Crimp roller 1	Crimp roller 2	MAZOUZI Module - no.	Wave length Crimp roller 1	Wave length Crimp roller 2	Wire \varnothing recommendation	MAZOUZI Crimp - no. Example
3	1.0	0.75	340	3.3	2.6	0.06 - 0.15mm	F= RO 340 012 N= RO 340 020 G= RO 340 025
4	1.5	1.0	400	5.0	3.3	0.10 - 0.30mm	
4	2.0	1.0	420	6.7	3.3	0.15 - 0.35mm	
4	2.5	1.0	430	8.5	3.3	0.20 - 0.40mm	F= RO 430 040 N= RO 430 060 G= RO 430 080
4	2.0	1.5	490	6.7	5.0	0.20 - 0.50mm	
5	2.5	1.5	500	8.5	5.0	0.30 - 0.60mm	
5	2.5	2.0	530	8.5	6.7	0.30 - 0.60 mm	F= RO 530 120 N= RO 530 180 G= RO 530 240
5	3.0	2.0	540	10.2	6.7	0.30 - 0.80mm	
5	3.5	2.0	550	11.9	6.7	0.30 - 0.80mm	
5	3.0	2.5	570	10.2	8.5	0.30 - 0.80 mm	F= RO 570 160 N= RO 570 240 G= RO 570 320

i Other Crimps possible after analysis of wire sample.

PIN - CRIMPED WIRES

Single - Crimped



F - FINE CRIMP:

Wire \varnothing x 2

N - NORMAL CRIMP:

Wire \varnothing x 3

G - COARSE CRIMP:

Wire \varnothing x 4 - 5

CRIMP - NO. EXAMPLE:

RO 206

012 (Wave depth in mm)

Type Crimp-No.
in mm

Caliber value for 0,12
(fine crimp wire \varnothing 0,06mm)



Caliber value

Pin-Crimp	Tool (internal Information)	\varnothing Wire	F - Fine Crimp	N - Normal Crimp	G - Coarse Crimp	MAZOUZI Crimp - no. Example
2	6	0.06 - 0.15mm	0.12mm	0.18mm	0.25mm	F = RO 206 012 N = RO 206 018 G = RO 206 025
2	8	0.06 - 0.20mm	0.40mm	0.60mm	0.80mm	F = RO 208 040 N = RO 208 060 G = RO 208 080
2	10	0.10 - 0.20mm	0.20mm	0.30mm	0.40mm	F = RO 210 020 N = RO 210 030 G = RO 210 040
2	15	0.15 - 0.25mm	0.30mm	0.45mm	0.60mm	F = RO 215 030 N = RO 215 045 G = RO 215 060
2	20	0.20 - 0.30mm	0.40mm	0.60mm	0.80mm	F = RO 220 040 F = RO 220 060 G = RO 220 080
2	25	0.25 - 0.40mm	0.50mm	0.75mm	1.00mm	F = RO 225 050 N = RO 225 075 G = RO 225 100
2	30	0.30 - 0.50mm	0.60mm	0.90mm	1.20mm	F = RO 230 060 N = RO 230 090 G = RO 230 120
2	30l	0.30 - 0.80mm	1.60mm	2.40mm	3.20mm	F = RO 231 160 N = RO 231 240 G = RO 231 320

i Other Crimps possible after analysis of wire sample.

STRAIGHTENED WIRE:

ROUND, WITH SMOOTH, BRIGHT SURFACE

DIMENSIONS: Ø 0.06 - 1.0mm

CUT LENGTHS 40 - 1570mm

AVAILABLE IN THE FOLLOWING DESIGNS:

- Naturally hard wires
- Oil-finish straightened wires
- Card wires

QUALITIES:

- Steel wire, oil-finish hardened and straightened
Strength 1930/2360 N/mm²
- Stainless steel wire, rust-free, in the raw
materials:
1.4301 - 1.4306 - 1.4310 - 1.4401
1.4404 - 1.4541 - 1.4571 - 1.4860
as well as special materials

- Copper wire
- Brass wire CuZn36 / CuZn37
- Bronze wire CuSn6
- New silver wire CuNi12Zn24
- Iron/Bessemer wire
- Aluminium wire
- Cord wire, brass-plated
- Nickel wire



SMOOTH WIRES:

ROUND, WITH SMOOTH, SHINY SURFACE

NATURALLY HARD, SOFT OR IN VARIOUS STRENGTH LEVELS

DEMENSIONS: Ø 0.06 - 1.20mm

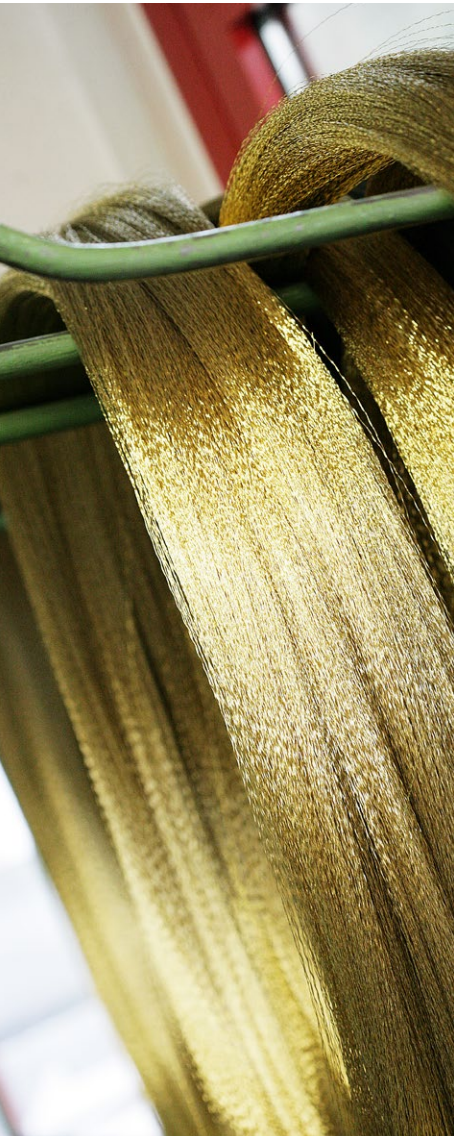
DESIGNS:

- Soft wires Ø 0.20 - 1.20mm
- Semi-hard wires Ø 0.15 - 1.10mm
- Hard wires Ø 0.06 - 0.60mm
- Cable wires Ø 0.04 - 1.00mm

QUALITIES:

- Cast steel wire, naturally hard,
- Strength 1960 to 3000 N/mm²
Design shiny, zinc-plated or brass-plated
(as mono or cord wire)
- Steel wire, oil-finish hardened,
Strength as agreed
- Stainless steel wire, rust-free, in the raw materials:
1.4301 - 1.4306 - 1.4310 - 1.4401
1.4404 - 1.4541 - 1.4571 - 1.4860
as well as special materials
- Copper wire
- Brass wire CuZn36 / CuZn37
- Bronze wire CuSn6
- New silver wire CuNi12Zn24
- Iron/Bessemer wire
- Aluminium wire
- Cord wire, brass-plated
- Nickel wire
- Cable wires according to DIN 2078





DELIVERY FORMS	WIRE								
	Gear crimped single	Gear crimped double	Pin crimp	Counted ends	Straightened wire	Smooth wire			
on plastic spools, on cardboard bobbins, as a strand, in a ring, as a bundle									
Bobbin approx. 25 - 50kg	✓	✓		✓				Ø 0.08 - 0.80mm	
Ring (Ø 500 - 800mm)	✓	✓	✓		✓			Ø 0.05 - 0.80mm	
4.00m strand	✓	✓	✓	✓	✓			Ø 0.08 - 0.60mm	
12.00m strand	✓	✓	✓	✓	✓			Ø 0.08 - 0.60mm	
Cut, secured with rubberband	✓	✓	✓	✓	✓			Ø 0.06 - 0.80mm	L41 - 12000mm
Cut in heat-shrink tube	✓	✓	✓	✓				Non-ferrous metals Ø 0.06 - 0.50mm	L20 - 2400mm
K 80							✓		
K 100							✓		
K 125							✓		
K 160							✓		
K 200						✓	✓		
K 250						✓	✓		
K 355						✓	✓		
SD300 coil	✓	✓	✓	✓	✓	✓	✓		
BP60 / BS60							✓		